



Pennsylvania
Department of Health

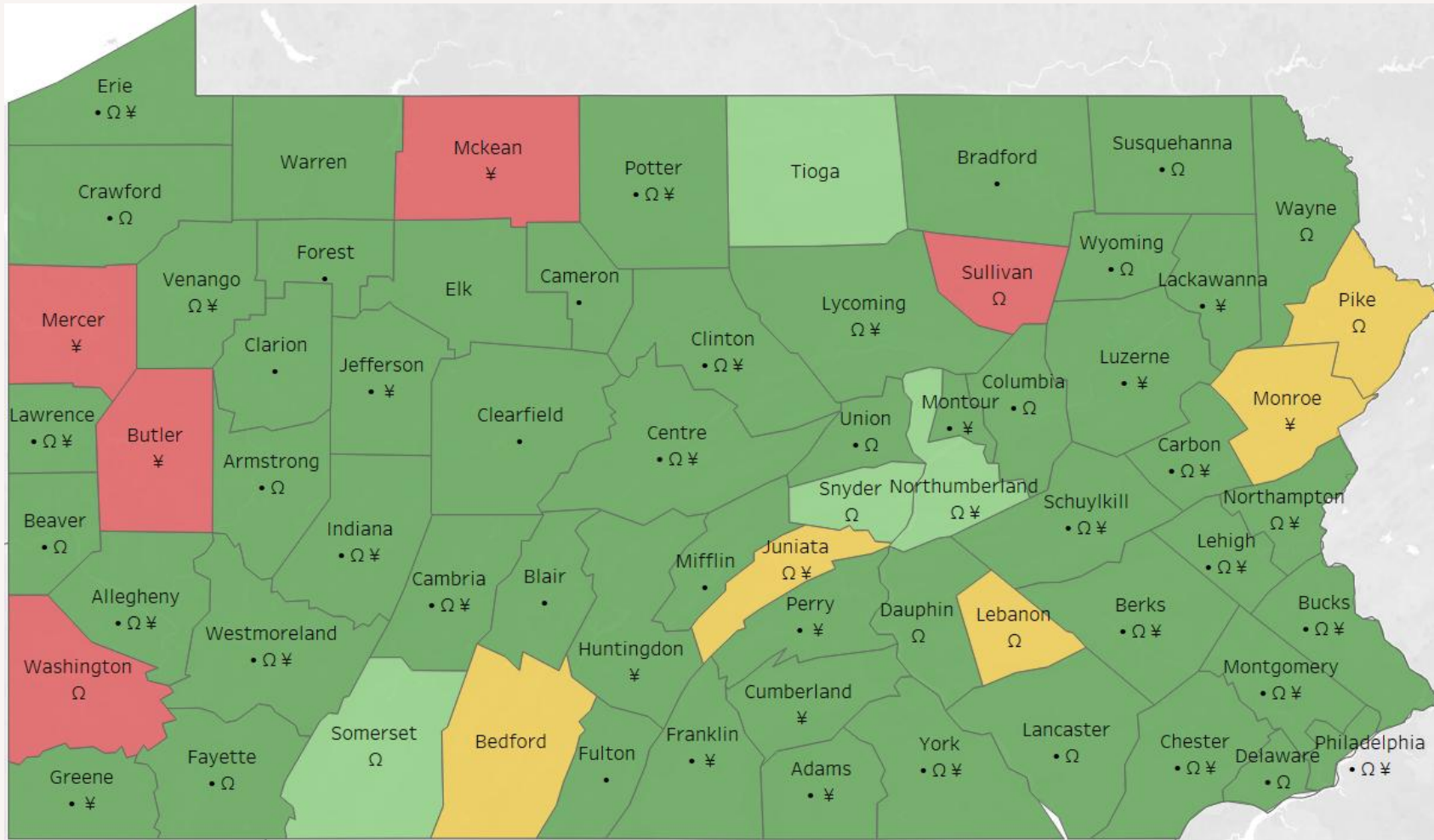
FEBRUARY 2026

Coroner and Medical Examiner Onboarding and Drug Overdose Surveillance Monthly Report

Office of Drug Surveillance and Misuse Prevention

PARTICIPATION STATUS

Coroner Onboarding Status as of February 2026



Overdose Death Reporting Status

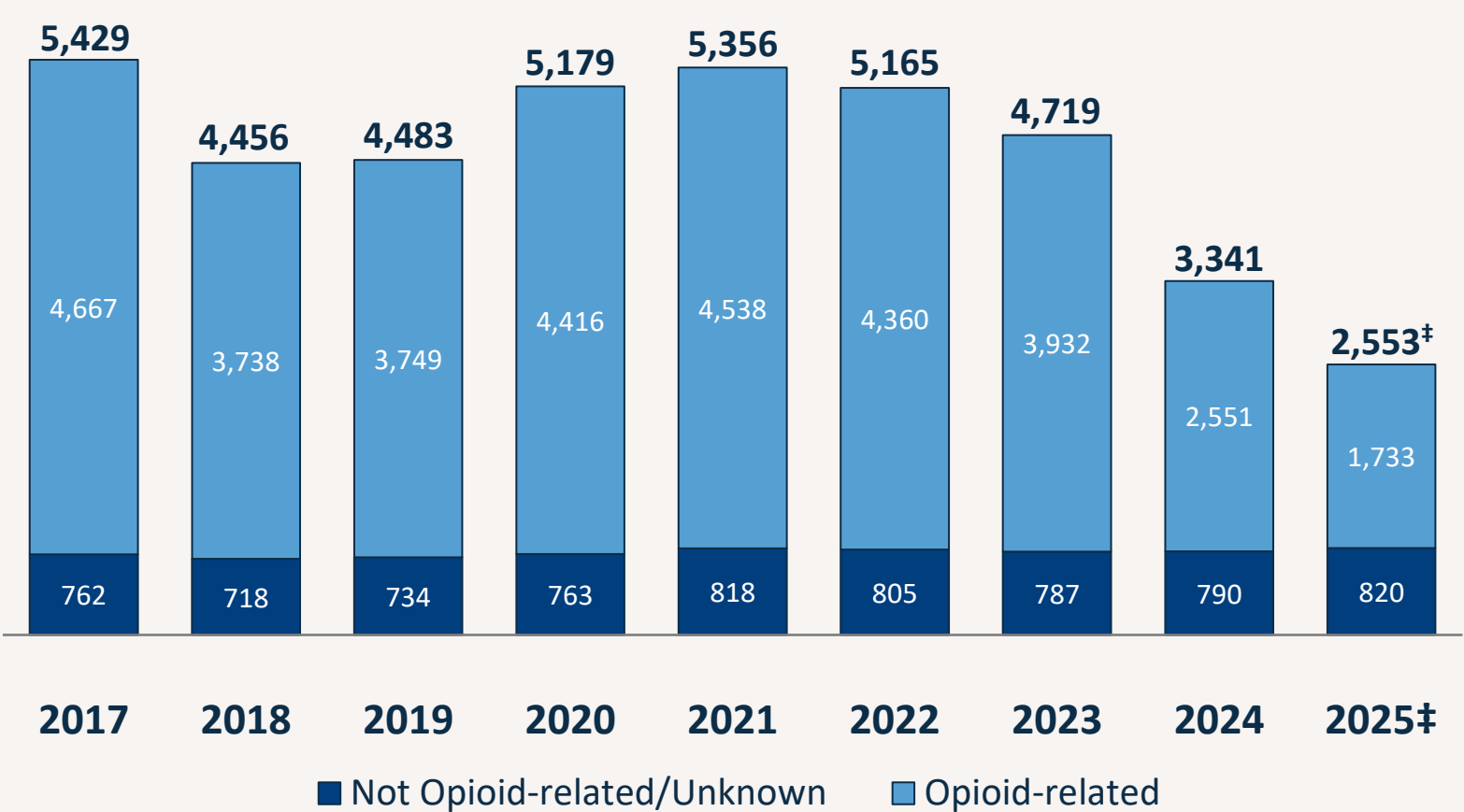
- On-Board (53)
- Intermittent Participation (4)
- In Discussion (5)
- Declined (5)

Additional DOH Program Participation Status

- Participating with Violent Death (44)
- Ω Participating with Child Death Review (41)
- ¥ Participating with Maternal Mortality Review Committee (37)



Estimated Unintentional & Undetermined Drug Overdose Deaths, 2017-2025‡



2024 Any Drug* estimates currently show a 29% decrease compared to 2023.

2024 Any Opioid** estimates currently show a 35% decrease compared to 2023.

*Any Drug overdoses include overdoses from any illicit, prescription or over-the-counter drugs, excluding alcohol-only related overdoses.

**Any Opioid overdoses include overdoses from illicit, prescription or over-the-counter opioids.

‡ Note for preliminary 2025 data, as ODSMP receives additional toxicology reports, Not Opioid-related/Unknown counts will change.

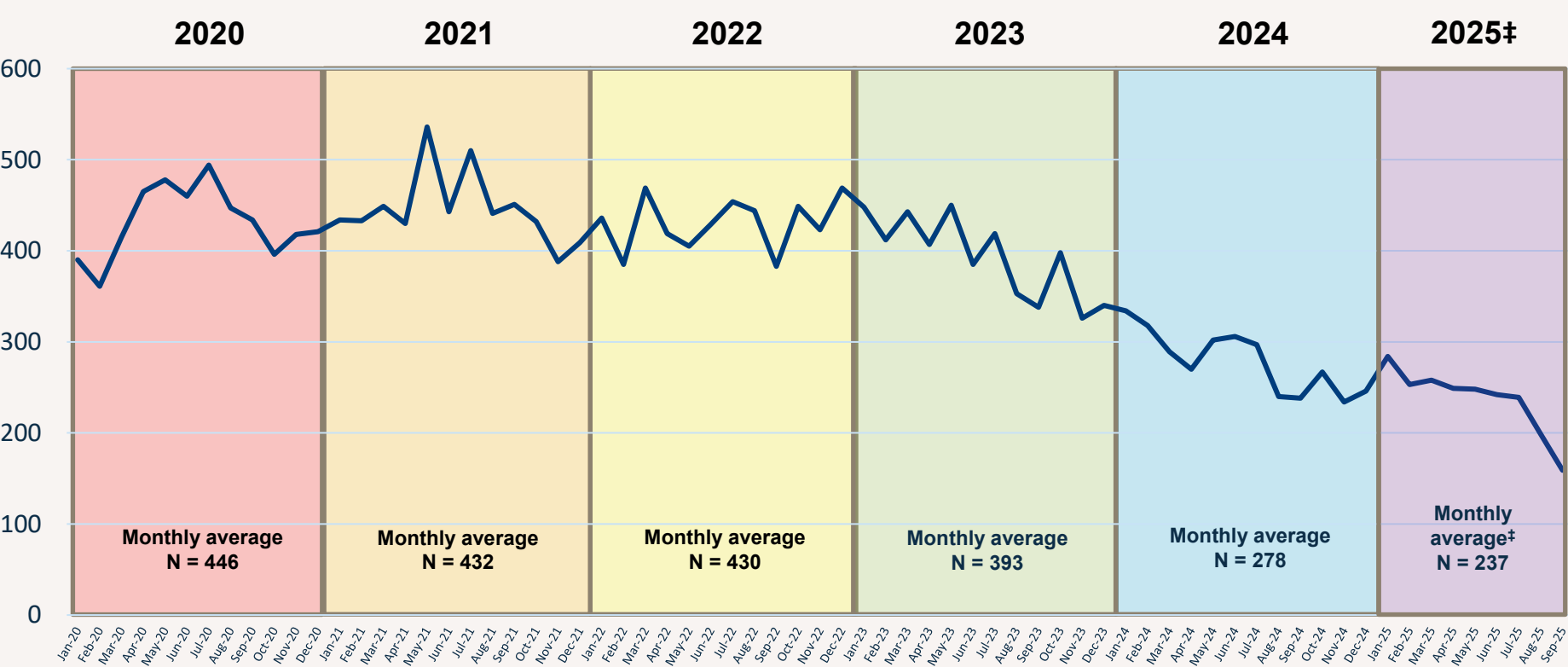
‡2025 death data is preliminary, based on death record data as of February 2026. Please note that death records for overdose deaths are often delayed by 3-6 months and counts may change. Counts do not include suicides or homicides where someone intended to harm another person by poisoning.

‡As of February 2026, ~6% of 2025 overdose deaths are missing drug specificity. Previous years are missing ≤5%.



FATAL DRUG OVERDOSE DATA

Estimated Any Drug* Overdose Deaths By Month, 2020-2025‡



The decreases seen in Any Drug* overdose death estimates throughout 2023 and early 2024 appear to have stabilized in late 2024 – early 2025. Please note that 2025 death data is very preliminary and **will increase**.

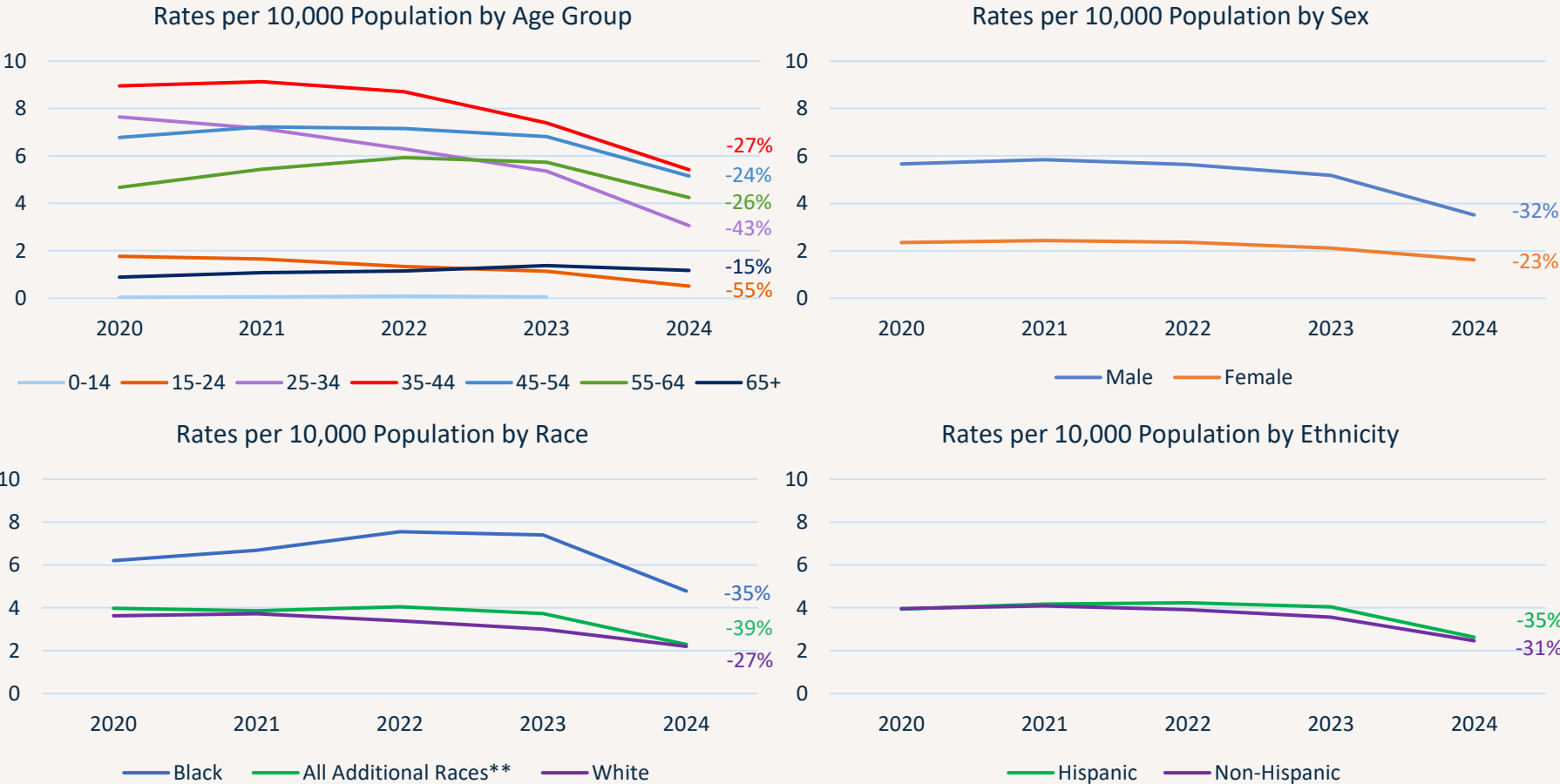
*Any Drug overdoses include overdoses from illicit, prescription or over-the-counter drugs, excluding alcohol-only related overdoses.

‡2025 death data is preliminary, based on death record data as of February 2026. Please note that death records for overdose deaths are often delayed by 3-6 months and counts may change. Counts do not include suicides or homicides where someone intended to harm another person by poisoning.



FATAL DRUG OVERDOSE DATA

Estimated Any Drug* Overdose Deaths By Demographics, 2017-2024‡



2024‡ rates, as well as percent changes compared to 2023, have been added. All demographic categories have shown a decrease in 2024‡ rates compared to the previous year.

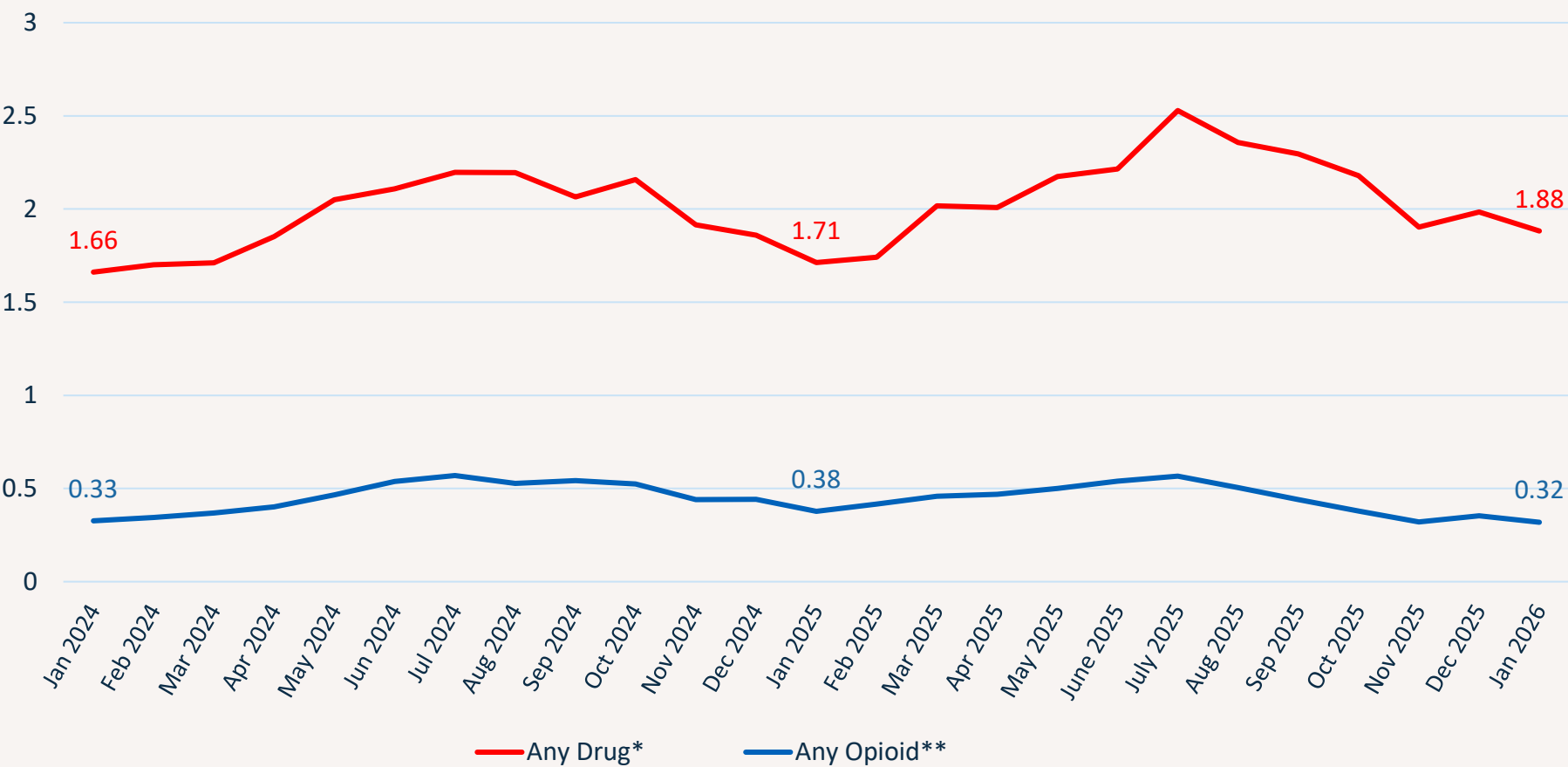
*Any Drug overdoses include overdoses from illicit, prescription or over-the-counter drugs, excluding alcohol-only related overdoses.

‡2024 death data is based on death record data as of January 2026. Please note that death records for overdose deaths are often delayed by 3-6 months and counts may change.
Counts do not include suicides or homicides where someone intended to harm another person by poisoning.
**Includes persons who identify as Asian, Native Hawaiian/Pacific Islander, American Indian/Alaska Native, or Other Race



NON-FATAL DRUG OVERDOSE DATA

Rates of Overdose-Related Emergency Department (ED) Visits per 10,000 Population By Month, 2024-2026



While fatal overdoses decreased in 2024, trends in nonfatal overdoses among Pennsylvania residents were comparable to those seen in 2023. In **2024**, there was a

- 0.6% **decrease** in rates of Any Drug* overdose-related ED visits compared to 2023.
- 3.7% **decrease** in rates of Any Opioid** overdose-related ED visits compared to 2023.

While 2025 fatal overdoses may show another annual decrease compared to 2024, trends in nonfatal overdoses in **2025** show a

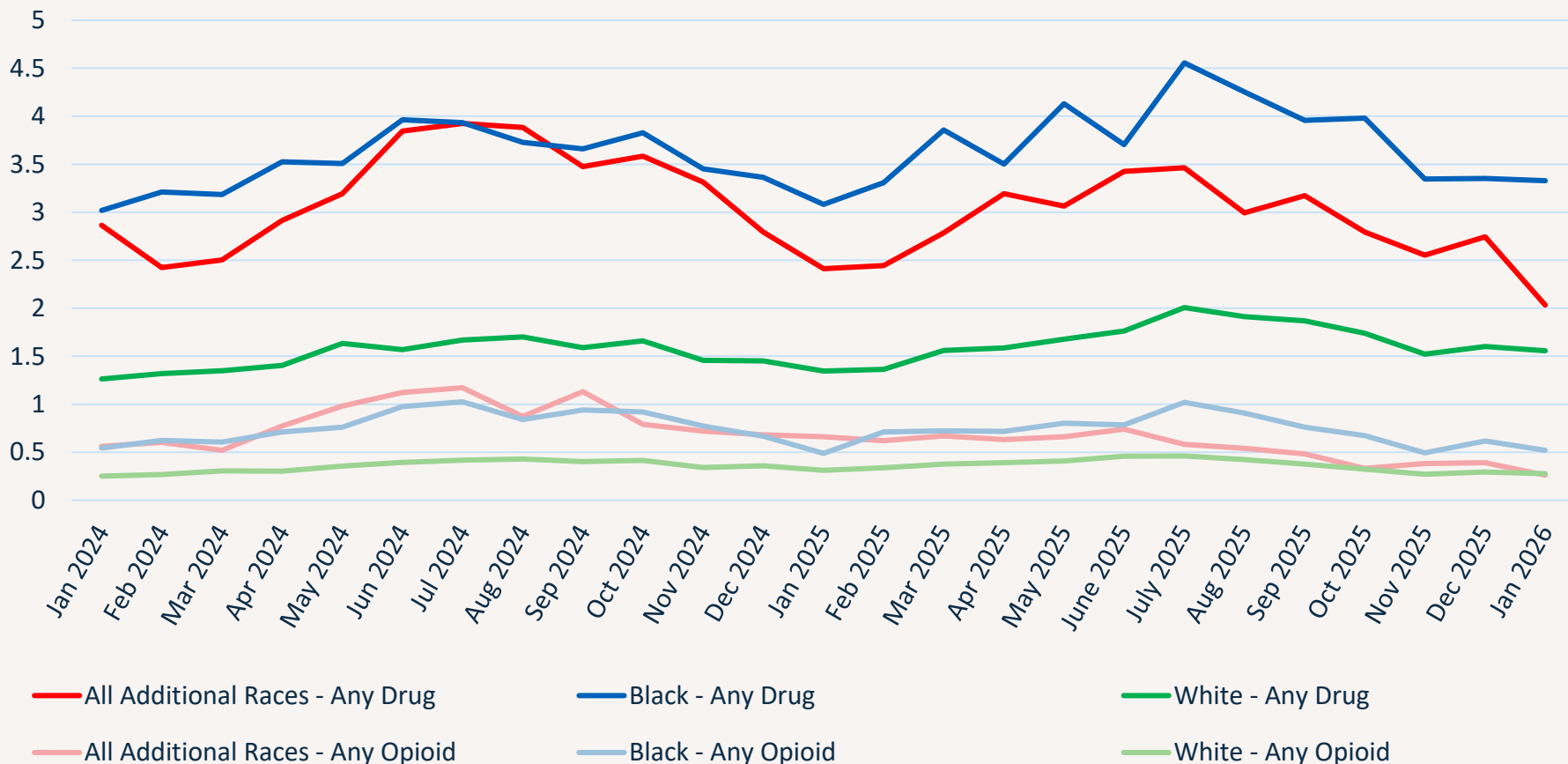
- 7.2% **increase** in rates of Any Drug* overdose-related ED visits compared to 2024.
- 2.9% **decrease** in rates of Any Opioid** overdose-related ED visits compared to 2024.
- Updated as of February 2026



*Any Drug overdoses include overdoses from illicit, prescription or over-the-counter drugs.
**Any Opioid overdoses include overdoses from illicit, prescription or over-the-counter opioids.

NON-FATAL DRUG OVERDOSE DATA

Rates of Any Drug* and Any Opioid** Overdose-Related ED Visits per 10,000 Population By Month and Race, 2024-2026



Overdose-related emergency department visits show varying trends across racial groups.

In 2025, for Any Drug* overdose-related ED visits there was a

- 9.4% **decrease** among people of All Additional Races compared to 2024.
- 6.4% **increase** among Black individuals compared to 2024.
- 10.6% **increase** among white individuals compared to 2024.
- Updated February 2026

In 2025, for Any Opioid** overdose-related ED visits there was a

- 32.6% **decrease** among people of All Additional Races compared to 2024.
- 7.2% **decrease** among Black individuals compared to 2024.
- 4.7% **increase** among white individuals compared to 2024.
- Updated February 2026



All Additional Races category includes persons who identify as Asian, Native Hawaiian/Pacific Islander, American Indian/Alaska Native, or Other Race

*Any Drug overdoses include overdoses from illicit, prescription or over-the-counter drugs.

**Any Opioid overdoses include overdoses from illicit, prescription or over-the-counter opioids.

Emerging Drug Trends†

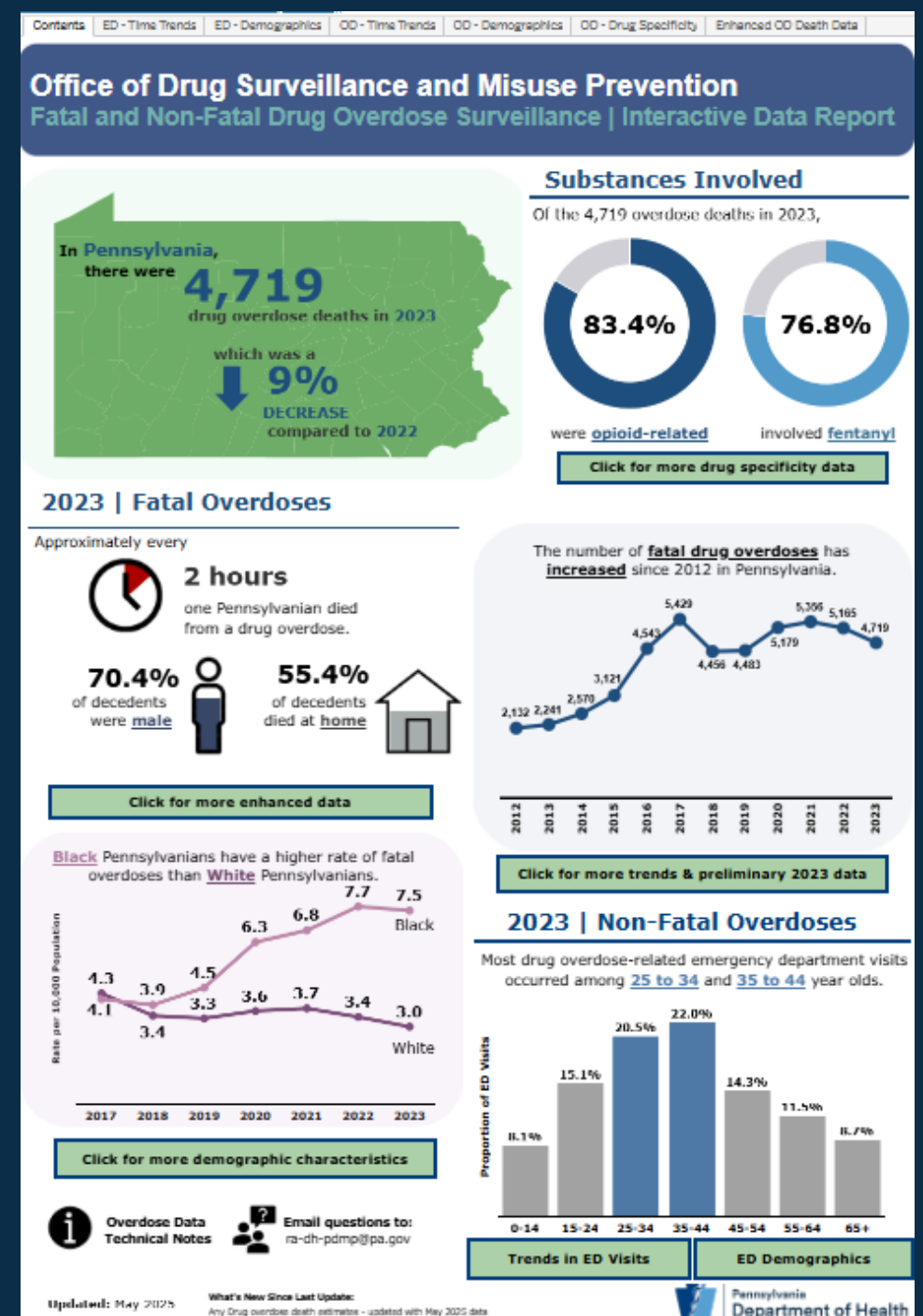
Substance	2023		2024		2025‡	
	Count	% Total Deaths	Count	% Total Deaths	Count	% Total Deaths
Carfentanil	1-5*	*	14	<1%	29	1%
Illegal Benzodiazepines	149	3%	153	5%	46	2%
Etomidate	0	0%	0	0%	0	0%
Medetomidine	0	0%	75	2%	180	7%
Nitazenes	16	<1%	31	<1%	1-5*	*
Tianeptine	1-5*	*	1-5*	*	1-5*	*
Xylazine	1,164	25%	839	25%	339	13%

†Counts represent deaths where a particular substance was noted as contributing to death on the death record. If the drugs contributing to death are not listed on the death record, ODSMP considers all drugs positive on toxicology to be contributory. Please note that testing capacity for novel substances varies by lab and a zero value does not necessarily mean that a particular substance is absent from the drug supply. *Counts between 1 and 5 are not displayed.

‡2025 death data is preliminary, based on death record data as of February 2026. Please note that death records for overdose deaths are often delayed by 3-6 months and counts may change. Counts do not include suicides or homicides where someone intended to harm another person by poisoning. As of February 2025, **~6% of 2025 overdose deaths are missing drug specificity**. Previous years are missing ≤5%.



Additional data on Unintentional & Undetermined Drug Overdoses, including county-specific data, can be found on the Drug Overdose Surveillance Interactive Data Report: <https://www.pa.gov/agencies/health/healthcare-and-public-health-professionals/pdmp/data.html>



Additional resources of interest:

Publications:

Pennsylvania Overdose Data Brief 2024

Inequities in naloxone administration among fatal overdose decedents by race and ethnicity in Pennsylvania, 2019-21 - PubMed

Controlled Substance Prescribing Patterns Among Fatal Overdose Decedents with an Opioid, Stimulant, or Both Contributing to Death — Pennsylvania, 2017–2022 | MMWR



Health Alerts:

Aug 2024: Medetomidine, a Potent Non-opioid Veterinary Sedative, Has Been Detected in the Illicit Drug Supply

Aug 2024: Emerging Substances in the Illicit Drug Supply

Dec 2024: Hospitals and Behavioral Health Providers are Reporting Severe and Worsening Presentations of Withdrawal among People who Use Drugs (PWUD) in Philadelphia

Jun 2025: Responding to Overdose and Withdrawal Involving Medetomidine – Updated Guidance

Oct 2025: Increased Volume of Calls Related to Kratom/Mitragynine and 7-hydroxymitragynine (7-OH) to Pennsylvania's Poison Centers

Nov 2025 (PDPH): Carfentanil is increasingly detected in drug supply and overdose deaths

Questions?

For additional information on Unintentional &
Undetermined Drug Overdose Surveillance,
please contact:

Carrie Thomas Goetz, PhD
Senior Epidemiologist

Office of Drug Surveillance and Misuse Prevention
Department of Health
cathomasgo@pa.gov

